

# ZÜMO® XT3

4.7" AND 6" MOTORCYCLE SAT NAVS



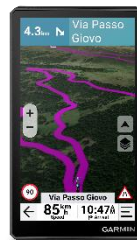
## PRODUCT OVERVIEW

zÜmo XT3 motorcycle sat navs are designed for the open road or the closed track. Available with a bright 4.7" or 6" display, both models boast a rugged design built to withstand harsh weather, vibration and rough conditions.

When it's time to hit the road, use the visual route planner with preloaded street maps and explore the great rides database to create a custom adventure; downloadable satellite imagery shows the view from above. After your ride, see how far you leaned over with the lean angle gauge. Ride the more curvy, scenic or thrilling roads with the Garmin Adventurous Routing™ setting and see popular routes on your map with the popular moto paths feature.

Once the gear comes off, review and share your ride details — such as lean angle, G-force, speed, elevation and more — in the Tread® smartphone app.

Headed to the track? With an active Garmin Performance Package™ plan, record your drag race splits, lap times, session performance and more with the onboard sensors (subscription required).



# ZÜMO® XT3

4.7" AND 6" MOTORCYCLE SAT NAV

## KEY FEATURES

### LEAN ANGLES

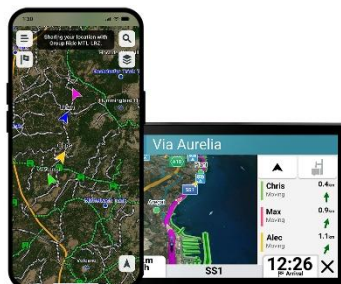
NEW

View and share your lean angle, G-force data, max speed and more in your ride summary with the [Tread® smartphone app](#).



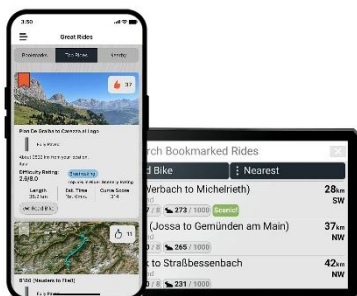
### GROUP TRACKING

Use the Tread app on your smartphone and/or zümo XT3 device to track friends with the group ride mobile feature<sup>1</sup> (mobile coverage required). Or, for rides outside of mobile coverage, use the [Group Ride Tracker](#) accessory<sup>2</sup> with the [Group Ride Tracker Y-adapter](#) (each sold separately) for tracking other riders equipped with compatible zümo or Tread® sat navs.



### FIND NEW ROUTES

Find new routes with the great rides feature on the Tread smartphone app; bookmark them, and they will automatically sync to your device. You can add difficulty ratings and upload photos to share with other riders.



### VISUAL ROUTE PLANNER

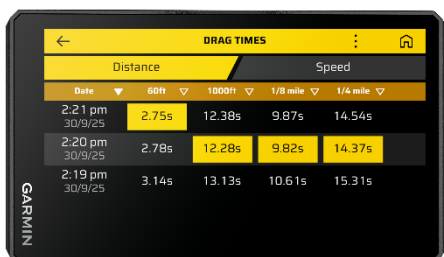
Plan a custom route on the device or use the Tread app with a compatible smartphone. Select custom routing features such as curves, hills or scenic byways. You can also import your own route via GPX, KML or KMZ files.



### DRAG RACE TIMER

NEW

Record your 0-100 km/h (0-60 mph) time, your 1/8-mile and 1/4-mile times and more with an active [Garmin Performance Package™](#) plan.



### LAP TIME REVIEW

NEW

See your lap times, race metrics, delta times and lean angles through each turn and more with an active [Garmin Performance Package™](#) plan.



**ZÜMO® XT3**

4.7" AND 6" MOTORCYCLE SAT NAVS

**KEY FEATURES**




<b>POPULAR PATHS</b>	See popular moto paths ridden by other riders to find new and exciting routes to explore.
<b>GARMIN ADVENTUROUS ROUTING</b>	Straight roads are boring. Find the most thrilling routes with hills, curves and sights and choose from 4 levels of difficulty.
<b>MICHELIN SCENIC ROUTES</b>	Discover unforgettable rides with MICHELIN® Scenic Routes; easily integrate them into your journey with the visual route planner or ride them spontaneously by selecting the highlighted green route directly on the map.
<b>SATELLITE IMAGERY</b>	High-resolution satellite imagery shows vivid overhead views of your route and surrounding terrain to help you navigate. Download the maps directly to your device via Wi-Fi® technology. No subscription required.
<b>MUSIC AND DIRECTIONS</b>	Keep your headset paired to your phone, then control your music or hear turn-by-turn directions from your sat nav. Turn prompts will be sent to your headset through the phone.
<b>TRAFFIC AND WEATHER</b>	Access real-time traffic and weather, share routes with other riders and get phone notifications via the Tread app <sup>3</sup> .
<b>OUTDOOR MAPS+ NEW</b>	With an active <a href="#">Outdoor Maps+</a> plan, get ongoing access to a variety of premium mapping content, including Adventure Roads and Trails for turn-by-turn routing when you venture off-road. Content is regularly updated and delivered directly to your device.
<b>TRACK RECORDER</b>	Record your ride data — such as speed, distance, lean angles, acceleration and more — and share the details with friends on the Tread app.
<b>MANAGE YOUR DATA</b>	Easily manage <sup>3</sup> tracks and routes across your sat nav and compatible smartphone by using the Tread® app.
<b>RIDER ALERTS</b>	Get alerts for hazards, such as upcoming sharp curves, speed changes and more, along your route.
<b>INCIDENT NOTIFICATIONS</b>	If an incident is detected, a text message with location information is automatically sent to your predetermined contact. <sup>3</sup>



**ZÜMO® XT3**

4.7" AND 6" MOTORCYCLE SAT NAVS

**PRODUCT COMPARISON**

	ZÜMO XT3 4.7"	ZÜMO XT3 6"	ZÜMO XT2
			
<b>DISPLAY SIZE</b>	4.0" W x 2.3" H (10.3 x 5.8 cm) 4.66" diag (11.8cm)	5.3" W x 3.0" H (13.3 x 7.5 cm) 6" diag (15.3cm)	5.3" W x 3.0" H (13.3 x 7.5 cm) 6" diag (15.3cm)
<b>DISPLAY RESOLUTION</b>	1280p x 720p	1280p x 720p	1280p x 720p
<b>DUAL-ORIENTATION DISPLAY</b>	•	•	•
<b>DROP RATING</b>	MIL-STD-810	MIL-STD-810	MIL-STD-810
<b><a href="#">WATER RATING</a></b>	IPX7	IPX7	IPX7
<b>PRELOADED STREET MAPS</b>	•	•	•
<b>HIGH-DEFINITION 3D TERRAIN</b>	•	•	
<b>PRELOADED TOPOGRAPHICAL MAPS</b>	•	•	•
<b>INTERNAL STORAGE</b>	64 GB	64 GB	32 GB
<b>ABILITY TO ADD MAPS</b>	•	•	•
<b>EXTERNAL MEMORY STORAGE</b>	256 GB max. microSD™ card (sold separately)	256 GB max. microSD™ card (sold separately)	256 GB max. microSD™ card (sold separately)
<b>INCLUDES MAP UPDATES</b>	•	•	•
<b>HIGH-RESOLUTION SATELLITE IMAGERY</b>	•	•	•
<b>COMPATIBLE WITH OUTDOOR MAPS+ PREMIUM MAPPING CONTENT</b>	Requires active plan	Requires active plan	
<b>GROUP TRACKING</b>	•	•	•
<b>CONTROL MUSIC AND MEDIA FROM SMARTPHONE OR MP3 PLAYER</b>	•	•	•
<b>SUNLIGHT READABLE AND WEATHER RESISTANT</b>	•	•	•
<b>GARMIN ADVENTUROUS ROUTING™</b>	•	•	•
<b>LEAN ANGLES</b>	•	•	
<b>RIDER ALERT WARNINGS FOR SHARP CURVES, SPEED CAMERAS AND MORE</b>	•	•	•
<b>PLANNED &amp; DYNAMIC FUEL STOPS</b>	•	•	•
<b>POPULAR PATHS (MOTO)</b>	•	•	•
<b>ELEVATION PROFILE</b>	•	•	•
<b>COMPATIBLE WITH GARMIN PERFORMANCE PACKAGE</b>	Requires active plan	Requires active plan	
<b>MOTORCYCLE POST-MOUNT</b>	Included	Sold separately	Sold separately
<b>MOTORCYCLE HANDLEBAR MOUNT KIT</b>	Sold separately	Included	Included
<b>BATTERY LIFE</b>	Up to 3 hours	Up to 6 hours	Up to 6 hours

# ZŪMO® XT3

4.7" AND 6" MOTORCYCLE SAT NAVS

## PRODUCT CONFIGURATIONS

HTS: 8526912000

### ZŪMO XT3 6"



INCLUDES	COUNTRY OF ORIGIN
zūmo XT3 motorcycle sat nav (6"), handlebar mount kit, charging/data cable, power cable and documentation	Made in Taiwan. Cables made in China, Taiwan or Philippines.

DESCRIPTION	SKU	UPC	RRP	TYPE OF DISTRIBUTION	MARKETPLACE BAN
6" Motorcycle Sat Nav	010-03861-10	753759367404	4699 DKK	Exclusive	Yes

### ZŪMO XT3 4.7"



INCLUDES	COUNTRY OF ORIGIN
zūmo XT3 motorcycle sat nav (4.7"), motorcycle post-mount, charging/data cable, power cable and documentation	Made in Taiwan. Cables made in China, Taiwan or Philippines.

DESCRIPTION	SKU	UPC	RRP	TYPE OF DISTRIBUTION	MARKETPLACE BAN
4.7" Motorcycle Sat Nav	010-03862-10	753759367442	3899 DKK	Exclusive	Yes

## PHYSICAL SPECIFICATIONS

	ZŪMO XT3 4.7"	ZŪMO XT3 6"
PHYSICAL DIMENSIONS W x H x D	5.04" x 2.95" x 0.95" (12.8 x 7.5 x 2.4 cm)	6.15" x 3.5" x 1" (15.6 x 8.9 x 2.5 cm)
WEIGHT	7 oz. (190 g)	12 oz. (340 g)

## PACKAGING SPECIFICATIONS

	ZŪMO XT3 4.7"	ZŪMO XT3 6"
GIFT BOX DIMENSIONS (W x H x D)	7.5" x 4.7" x 3.9" (19.0 x 12.0 x 9.9 cm)	7.5" x 4.7" x 3.9" (19.0 x 12.0 x 9.9 cm)
GIFT BOX WEIGHT	1 lb, 7.6 oz (669 g)	1 lb, 15.2 oz (885 g)
MASTER CARTON DIMENSIONS (W x H x D)	20.7" x 15.6" x 10.6" (52.5 cm x 39.6 cm x 27.0 cm)	20.7" x 15.6" x 10.6" (52.5 cm x 39.6 cm x 27.0 cm)
MASTER CARTON WEIGHT	32 lbs, 9.4 oz (14.8 kg)	42 lbs, 1.7 oz (19.1 kg)
MASTER CARTON QUANTITY	20	20



# ZÜMO® XT3

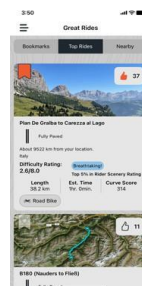
4.7" AND 6" MOTORCYCLE SAT NAVS

## COMPATIBLE APPS

### TREAD® MOBILE APP



Use the Tread smartphone app to easily plan your next adventure or view and edit routes from the zümo XT3 display.



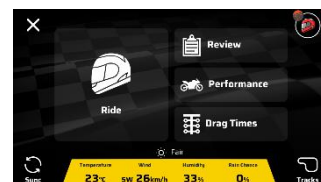
## COMPATIBLE PLANS

### GARMIN PERFORMANCE PACKAGE™



Activate a plan for Garmin Performance Package Drag Racing Features. Pair with your zümo XT3 motorcycle sat nav to see riding data and performance stats on the track. When you are away from your GPS device you can also access your data from your smartphone or tablet with use of the Garmin Catalyst™ mobile app.

ANNUAL RRP: **899 DKK**  
MONTHLY RRP: **89 DKK**



### OUTDOOR MAPS+



With an active Outdoor Maps+ plan, get ongoing access to a variety of premium mapping content, including Adventure Roads and Trails for turn-by-turn routing when you venture off-road. Content is regularly updated and delivered directly to your device.

ANNUAL RRP: **435 DKK**  
MONTHLY RRP: **45 DKK**



**ZŪMO® XT3**

4.7" AND 6" MOTORCYCLE SAT NAVS

**COMPATIBLE PRODUCT OVERVIEW****ZŪMO™ R1 RADAR**

This high-performance rearview and blind spot motorcycle radar<sup>4</sup> monitors vehicles around you, promoting greater awareness of nearby vehicles. Plus, the external lights help you be seen by other vehicles to help foster a safer riding environment.

SKU: **010-02902-10**  
 UPC: **753759334598**  
 RRP: **4649 DKK**

**HANDLEBAR CONTROLLER**

Control your zūmo XT3 motorcycle sat nav without taking your hands off the grips of your motorcycle.

SKU: **010-02974-00**  
 UPC: **753759344771**  
 RRP: **1199 DKK**

**INREACH® MINI 3 PLUS SATELLITE COMMUNICATOR**

Stay connected with inReach Mini 3 Plus, the rugged SOS satellite communicator<sup>5</sup> with a colour touchscreen display. When your adventure takes you beyond cellular range, inReach technology lets you send and receive text messages with an active inReach plan.

MINI 3 PLUS:  
 SKU: **010-03387-10**  
 UPC: **753759361402**  
 RRP: **3899 DKK**

**GROUP RIDE TRACKER**

Pair with your compatible Garmin sat nav for location sharing with your group when your adventure takes you beyond cellular range. This solution also requires use of the Group Ride Tracker Y-adapter kit (part number 010-13985-00, sold separately).

SKU: **010-13087-06**  
 UPC: **753759292003**  
 RRP: **2329 DKK**

# ZÜMO® XT3

4.7" AND 6" MOTORCYCLE SAT NAV

## COMPATIBLE ACCESSORY OVERVIEW

### CARRYING CASE FOR 4.7" SAT NAV **NEW**



Travel in style with this sleek carrying case. It's built to endure the elements, protecting your compatible sat nav for the long haul. This case is designed with a durable thermo-molded exterior with a zipper-accessed padded interior.

SKU: **010-13879-01**  
 UPC: **753759367480**  
 RRP: **199 DKK**

### MOTO MOUNT BRACKET **NEW**



Mount your compatible zümo sat nav to your motorcycle with this bracket that attaches to the bike's handlebars using a separate mounting kit (sold separately).

SKU: **010-13879-02**  
 UPC: **753759367466**  
 RRP: **159 DKK**

### HANDLEBAR MOUNT KIT **NEW**



Use this mount kit with U-bolt base to secure your compatible Garmin device and provide high visibility on your handlebars. This mount has a ball joint size of 1" (25.4 mm).

SKU: **010-13879-03**  
 UPC: **753759367473**  
 RRP: **469 DKK**

### MOTORCYCLE POST-MOUNT **NEW**



Ideal for smaller motorcycles, use this sleek post-mount hardware to secure your compatible Garmin device to your motorcycle. The mount has a ball size of 1" (25.4 mm).

SKU: **010-13879-04**  
 UPC: **753759367497**  
 RRP: **469 DKK**

	SKU	UPC	RRP	DESCRIPTION	IMAGE
BC™ 50 WITH NIGHT VISION	010-02610-00	753759277505	2329 DKK	This wireless backup camera provides a clear view on your compatible Garmin sat nav.	
GARMIN POWERSWITCH™	010-02466-00	753759259525	3899 DKK	A compact digital switch box that offers convenient centralised control of your vehicle's 12-volt accessories from a compatible Garmin sat nav or smartphone <sup>6</sup>	
CARRYING CASE 6"	010-12953-02	753759257446	209 DKK	Travel in style with this sleek carrying case for your 6" zümo XT2 and XT3 device	
HANDLEBAR CONTROLLER AND GROUP RIDE TRACKER Y-ADAPTER KIT (6" DEVICES)	010-13985-00	753759354169	669 DKK	Use this adapter cable to connect your Group Ride Tracker (sold separately) with your zümo XT2 or XT3.	
MOTORCYCLE POWER CABLE	010-13285-03	753759317409	309 DKK	Use this power/ground cable in conjunction with a mount bracket (sold separately) to attach your compatible zümo sat nav to your motorcycle	

<sup>1</sup>Tracking via Group Ride Mobile requires the Tread app running on your and each friend's compatible smartphone with Bluetooth® technology and an active cellular connection.  
<sup>2</sup>Group tracking with the Group Ride Tracker accessory is only available for riders using a compatible zümo or Tread sat nav and Tread app. Connection to vehicle power is required for group tracking. Pair zümo XT3 with your helmet or headset (not included) enabled with Bluetooth technology for hands-free communication. zümo XT3 devices also require the Group Ride Tracker Y-adapter cable (sold separately).  
<sup>3</sup>Requires zümo to be paired with your smartphone with Bluetooth and GPS technology and running the Tread app.  
<sup>4</sup>Adverse weather conditions and wet roads may interfere with operation of the device. Always maintain awareness of your surroundings while using this device, especially in these conditions.  
<sup>5</sup>Some jurisdictions regulate or prohibit the use of satellite communication devices. It is the responsibility of the user to know and follow all applicable laws in jurisdictions where the device is intended to be used.  
<sup>6</sup>Requires use of the [Garmin PowerSwitch](#) app downloaded on your compatible device and paired to the Garmin PowerSwitch digital switch box.

# EU DATACT INFORMATION

## AUTOMOTIVE

---

### DATA TYPES

This product generates data such as:

- Location data (e.g., GPS coordinates)
- Movement data (e.g., accelerometer)

For more details concerning the data generated by this device, please refer to the specifications provided on the product page.

---

### FORMAT

GPX and JSON

---

### ESTIMATED VOLUME

Volume of data depends on factors such as frequency of use and settings.

---

### IS THE PRODUCT CAPABLE OF GENERATING DATA CONTINUOUSLY AND IN REAL-TIME?

Yes, but whether data is actually generated continuously depends on the features used and settings.

---

### IS THE PRODUCT CAPABLE OF STORING DATA ON THE DEVICE OR ON REMOTE SERVER?

Both, but data is only uploaded to the server if synced.

---

### RETENTION PERIOD

Data is retained on device until deleted by user or until device runs out of storage space. Data uploaded to account is retained as long as account active or until deleted by user.

---

### DATA MANAGEMENT AND RELATED TERMS

Visit our [Account Management Center](#) to manage your data. Please review the applicable [Privacy Policy](#) and [Terms of Use](#).

---